



Image may differ from product. See specification for details.

SONL 232-532

Split pillow block housing, SONL series

SONL pillow (plummer) block housings are specially designed for oil lubrication. They can accommodate high temperatures and bearings operating at high speeds. They have a strong, stiff design and are characterized by a number of built-in features that maximize the effects of the lubricant and extend bearing service life.

- Designed for oil lubrication
- Can accommodate high temperatures
- Can accommodate high bearing operating speeds
- Robust design
- Long service life

Overview

Dimensions

Diameter of bearing seat	290 mm
Width of bearing seat	104 mm
Centre height (pillow block)	215 mm
Centre distance between bolt holes	470 mm
Centre distance between bolt holes (axial direction)	120 mm
Attachment bolt diameter	30 mm

Properties

Housing type	Plummer/pillow block
Housing configuration	Two-piece
Mounting arrangement	Through shaft/Shaft end
Number of bolt holes for fasteners	4
Material, housing	Cast iron
Bearing housing seal type	Oil seal
Housing lubrication feature/possibility	Oil

Logistics

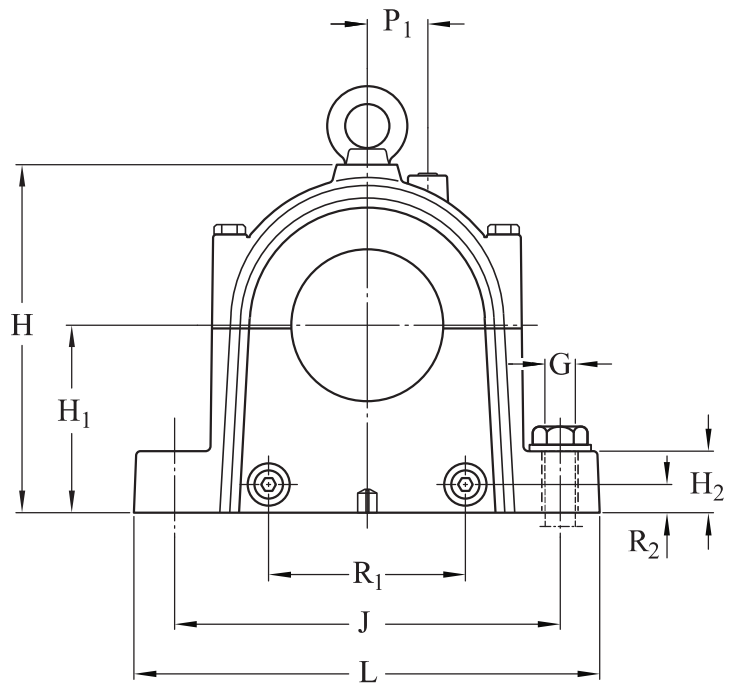
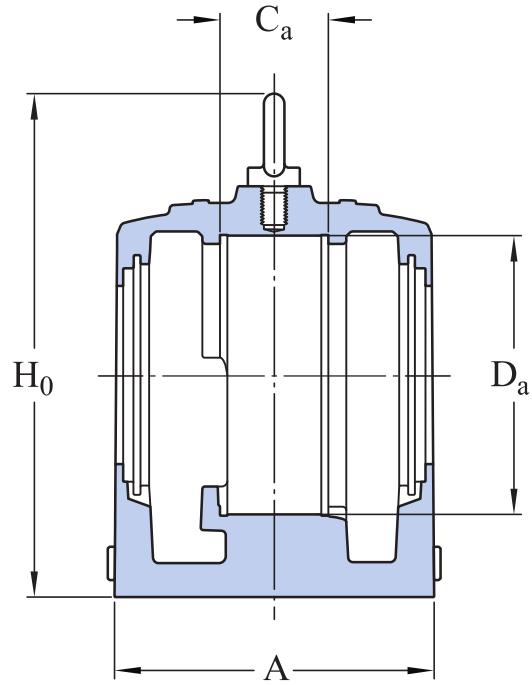
Product net weight	119 kg
eClass code	23-05-17-01
UNSPSC code	31171519

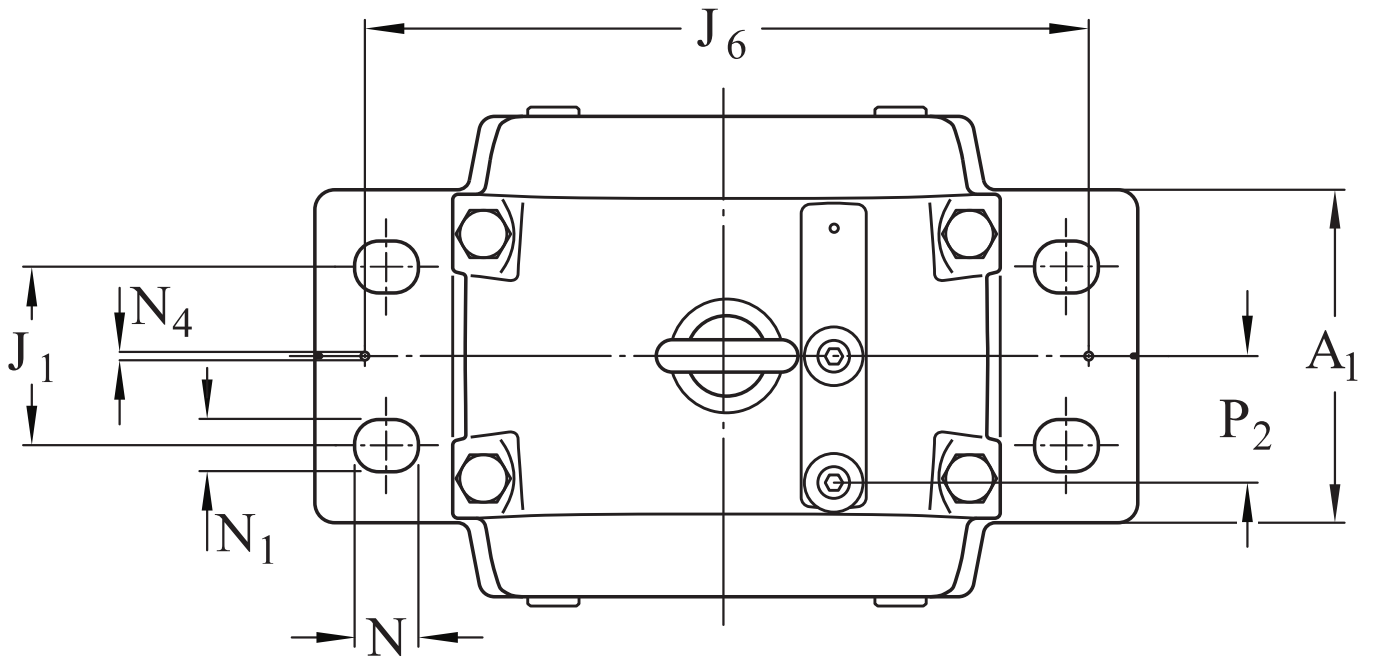
Technical specification

Associated products

Housing

SONL 232-532





Dimensions

BEARING SEAT

D_a	290 mm	Diameter of bearing seat
C_a	104 mm	Width of bearing seat
H_1	215 mm	Centre height of bearing seat

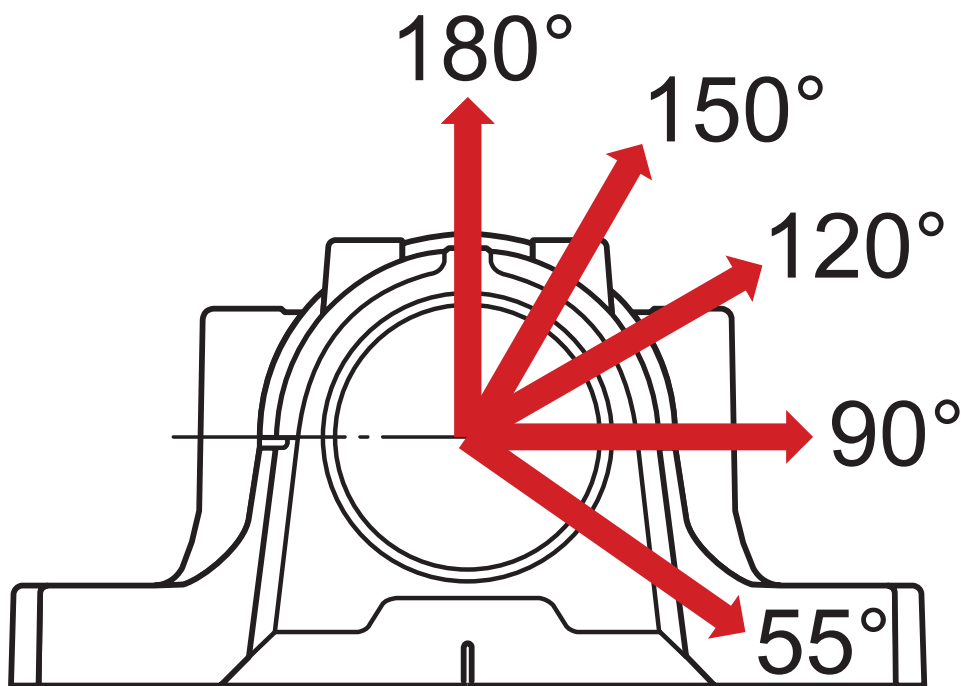
OUTSIDE DIMENSIONS

A	278 mm	Overall width
A_1	205 mm	Foot width
H	405 mm	Overall height
H_0	476 mm	Height including eye bolt
H_2	65 mm	Foot height
J	470 mm	Distance between attachment bolts
J_1	120 mm	Distance between attachment bolts
L	560 mm	Overall length
N	42 mm	Length of attachment bolt hole
N_1	35 mm	Width of attachment bolt hole
P_1	65 mm	Distance housing centre line to oil inlet, housing cap

P_2	78 mm	Distance housing centre line to oil inlet, housing cap
R_1	252 mm	Distance between oil outlets in housing base
R_2	26 mm	Height of oil outlet position

DOWEL PINS

J_6	480 mm	Distance between dowel pins
N_4	max. 12 mm	Diameter of dowel pins



Calculation data

BREAKING LOADS

P_{55°	3 000 kN	Breaking load at 55° load angle
P_{90°	1 230 kN	Breaking load at 90° load angle
P_{120°	830 kN	Breaking load at 120° load angle
P_{150°	770 kN	Breaking load at 150° load angle
P_{180°	1 000 kN	Breaking load at 180° load angle
P_a	400 kN	Breaking load, axial

YIELD POINT OF CAP BOLTS

Q _{120°}	1 250 kN	Load to reach yield point at 120° load angle
Q _{150°}	720 kN	Load to reach yield point at 150° load angle
Q _{180°}	620 kN	Load to reach yield point at 180° load angle

Mounting information

Size of cap bolt		M20x140
Recommended tightening torque for cap bolts		200 N·m
Recommended diameter for attachment bolts	G	30 mm
Recommended tightening torque for attachment bolts		1 310 N·m
Size of eye bolt		M20
Oil level		min. 68 mm
Oil level		max. 95 mm
Oil fill		max. 1.3 l
Oil fill		min. 2 l

More Information

Terms of use

By accessing and using this website / app owned and published by AB SKF (publ.) (556007-3495 · Gothenburg) ("SKF"), you agree to the following terms and conditions:

Warranty Disclaimer and Limitation of Liability

Although every care has been taken to assure the accuracy of the information on this website / app, SKF provides this information "AS IS" and DISCLAIMS ALL WARRANTIES, EXPRESS OR IMPLIED, INCLUDING, BUT NOT LIMITED TO, IMPLIED WARRANTIES OF MERCHANTABILITY AND FITNESS FOR A PARTICULAR PURPOSE. You acknowledge that your use of this website / app is at your sole risk, that you assume full responsibility for all costs associated with use of this website / app, and that SKF shall not be liable for any direct, incidental, consequential, or indirect damages of any kind arising out of your access to, or use of the information or software made available on this website / app.

Any warranties and representations in this website / app for SKF products or services that you purchase or use will be subject to the agreed upon terms and conditions in the contract for such product or service.

Further, for non-SKF websites / apps that are referenced in our website / app or where a hyperlink appears, SKF makes no warranties concerning the accuracy or reliability of the information in these websites / apps and assumes no responsibility for material created or published by third parties contained therein. In addition, SKF does not warrant that this website / app or these other linked websites / apps are free from viruses or other harmful elements.

Third Party Services

When viewing YouTube content via the SKF website(s) (i.e. using [YouTube API Services](#)), you agree to be bound by the [YouTube Terms of Service](#).

Copyright

Copyright in this website / app copyright of the information and software made available on this website / app rest with SKF or its licensors. All rights are reserved. All licensed material will reference the licensor that has granted SKF the right to use the material. The information and software made available on this website / app may not be reproduced, duplicated, copied, transferred, distributed, stored, modified, downloaded or otherwise exploited for any commercial use without the prior written approval of SKF. However, it may be reproduced, stored and downloaded for use by individuals without prior written approval of SKF. Under no circumstances may this information or software be supplied to third parties.

This website / app includes certain images used under license from Shutterstock, Inc.

Trademarks and Patents

All trademarks, brand names, and corporate logos displayed on the website / app are the property of SKF or its licensors, and may not be used in any way without prior written approval by SKF. All licensed trademarks published on this website / app reference the licensor that has granted SKF the right to use the trademark. Access to this website / app does not grant to the user any license under any patents owned by or licensed to SKF.

Changes

SKF reserves the right to make changes or additions to this website / app at any time.